

# HEMBLINGTON NEWS

Week beginning: Monday 16th September 2024

[office-hp@yare-edu.org.uk](mailto:office-hp@yare-edu.org.uk)

[www.hemblingtonprimaryschool.org.uk](http://www.hemblingtonprimaryschool.org.uk)



## Greetings

After a chilly end to last week, we hope you have been able to enjoy the warmer weather of the weekend, which is forecast to continue this week.

Our new Cygnets are now attending full time and have shown excellent resilience!

On Thursday this week, Thorpe High School are hosting their Open Evening (5-8pm) for families with pupils in Year 6.

This week's assemblies continue with our responsibility theme.

### Be Respectful

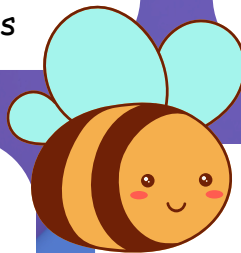
Swans showed excellent respect on their trip to Pizza Express

### Be Ready

Falcon class begin their Swimming lessons at TSAHS this week!

### Be Responsible

Older pupils have been looking after our new Cygnets!



### Be Resilient

Ospreys showed great resilience when working in groups to build the tallest tower!

### Cycle to School Week

Monday 16th - Friday 20th September

Next week is national cycle to school week. This is an opportunity to encourage your child/ren to develop healthy habits by cycling to school. Pupils cycling to school next week will be awarded a dojo for being responsible.

Last week's attendance:  
99.6%



To be the best you can...  
on a voyage of discovery

Be responsible, Be respectful, Be resilient and Be ready

## Parenting Course

Would you like to be a calmer, more confident parent? Sign up for the Understanding Your Child: The Solihull Approach course to discover how your child's mind develops and what you can do to avoid tantrums and behaviour challenges. It's free for families in Norfolk. Simply work through the short online course in your own time by signing up at [www.justonenorfolk.nhs.uk/online-learning](http://www.justonenorfolk.nhs.uk/online-learning) (Access code JON70).



**Did you know?**

Just One Number has Speech and Language Therapists who can offer support with children's speech, language and communication needs.

**0300 300 0123**

Mon - Fri  
8am - 6pm



[justonenorfolk.nhs.uk/speech-language](http://justonenorfolk.nhs.uk/speech-language)

## Harvest Festival

On Friday 27th September we will be holding our School Harvest festival assembly. As part of this assembly we are asking children to bring in donations of dried or tinned food, which will go with Hemblington Church donations to the food bank.



Swans represented the school superbly when they visited Pizza Express last week! They had a wonderful time learning how pizzas are made and then had a go themselves! The pupils said they were delicious!!



# FANTASTIC LEARNING



Falcons have been showing teamwork skills in PE this week. How do you travel across the field with 5 feet and 2 hands!?



Kingfisher Class showed their scientific skills by making careful observational drawings of different rocks, noting their unique features and writing interesting descriptions of them.



Maths this week has seen the Robins counting in 10's and reading, writing and representing numbers in different ways.

# REMINDERS

## Music Lessons

The following music tuition is available for pupils: Guitars - Years 4 to 6, and Woodwind Year 2 - 6. Costs are set by the provider and vary according to the instrument and group size. For guitar please email Miss Brown on [musicejb@outlook.com](mailto:musicejb@outlook.com), for woodwind please email Mrs Moore on [woodwindteacher1@gmail.com](mailto:woodwindteacher1@gmail.com)

## Clubs

NCFC Football - Key Stage 2 - Thursday - please click [here](#) to book and pay

Multi sports - Years 1 -6 - Monday - please book via Arbor

Art Club - Years 1 - 6 - Monday

Wrap Around Care 'Hedgehogs'. Monday to Friday - 7.30 - 8.40 am at £6.00 a session and 3.15 - 6 pm at £12.00 a session, Email [office-hp@yare-edu.org.uk](mailto:office-hp@yare-edu.org.uk) to book a place and pay via Arbor. Invoices and payments via Arbor.

## School Uniform

Royal blue sweatshirt with the school logo, white polo shirt, black or grey trousers, shorts or skirt with navy or white tights or socks and plain black, flat shoes with a good sole grip. Blue and white gingham dresses are also permitted. PE kit is house colour t-shirt, black or navy shorts, dark colour trainers and the navy school logo sweatshirt or black, navy or grey tracksuit. Please note all clothing must be plain or showing the school logo.

## School Lunches

Please ensure school lunches are booked through Arbor by 8 am so your child receives what they like.

Please note Aspens are organising a special lunch for Thursday 19th September. Unfortunately, we are unable to change the menu on Arbor therefore if parents/carers order a main meal, then their child will receive the main meal 'Hunstanton'.

If a meal has not been booked on Arbor, parents will be asked to bring a packed lunch into school.

## Parking

Parents and carers are reminded to be considerate of local residents at the start and end of the school day. Please use Heathlands or the Tamarind for parking before and after school.

## Attendance

As you will be aware Pupil Attendance is a significant focus for the DFE, Local Authority and School. For further information regarding the importance of school attendance please click this link: [Attendance](#)



## Family Support and Safeguarding at Hemblington Primary

As a school we are dedicated to supporting our families. We recognise life can be tough and so we are here to support you, to enable the best outcomes for our pupils.

There is always a member of staff on the gate each morning and after-school who you are welcome to talk to. Also, you can email Miss Brugger or the school office, or contact your child's class teacher via Dojo.

We have a HPS Padlet which contains links to a huge variety of support suggestions. Please do come and speak to us if you have any worries or concerns.

## Thorpe St. Andrew's Open Evening for Prospect Year 7

BROAD HORIZONS  
EDUCATION TRUST



Thorpe St Andrew School and Sixth Form  
Open Evening

Thursday 19 September 2024—5:00pm to 8:00pm

Come and find out who we ARE - #WeAreJoining

We are delighted to invite you and your family to our Open Evening  
for students eligible for high school in September 2025



Aspire



Respect



Engage

BROAD HORIZONS  
EDUCATION TRUST



Principal/Vice Principal address in the  
South Site Hall at 5:30pm, 6:20pm & 7:10pm

Thorpe Life Experience Presentation in the North Site Hall at  
5:30pm, 6:20pm & 7:10pm

Please enter the school via the entrance on Pound Lane.

Parking is available at Fitzmaurice Pavillion & the  
School Field

Disabled/Accessible Parking is available in our Laundry Lane Car Park  
(If parking in the neighbouring streets to the school, please be respectful of our community)



Aspire



Respect



Engage

## DIARY DATES

Monday 16th September - Swimming for Falcons

Monday 23rd - Friday 27th September - National Cycling to School Week

Monday 23rd September - Kingfisher Educational Visit to Gressenthall

Thursday 19th September - Year 6 Open Evening for TSAHS

Tuesday 24th September - Parent Forum 08.45 - 9.45 am

Tuesday 24th September - Prospective Year R Parents Open morning

Tuesday 24th September - Flu Vaccinations in the afternoon

Thursday 26th September - NSPCC sessions for Year 2, 5 and 6

Friday 27th September - Harvest Festival - bring donations for the local foodbank

Monday 30th September - Year 1/2 Boys Football event with NCFE - 8 places tbc

Monday 30th September - Stay and Play 3.15 - 4 pm

Wednesday 2nd October - Year 3 to TSAHS Disney Fun Festival (fancy dress) 12.30 - 14.30

Thursday 3rd October - Aspens Special Jungle Fest menu

Tuesday 8th October - Individual pupil photos

Monday 14th October - 8 pm Friends meeting in person and virtual

Tuesday 15th and Thursday 17th October - Parent Teacher Consultations 3.30 - 6 pm

Wednesday 16th October - Fencing taster day

Tuesday 22nd October - 3 pm - Parents join children for a Come and Read session

Thursday 24th October - Halloween Dress Down Day - £1 donation to the Friends of Hemblington

Friday 25th October - Friday 1st November - Half term

Monday 4th November - Pupils return

Monday 11th November - 8 pm Friends meeting in person and virtual

Wednesday 13 - 21st November - Travelling Book Fair

Friday 15th November - Children in Need

Wednesday 20th November - Prospective Year R parents for 2025/26 open morning 9.30 am

Thursday 21st November - Aspens Special Sparkle Menu

Tuesday 3rd December - Choir singing at Cathedral Carol Service 7.30 pm

**Wednesday 4th December - Year 6 to Crucial Crew**

Monday 16th December and Wednesday 18th December - 2 pm - Osprey and Falcon Classes Christmas Celebration

Tuesday 17th 2 pm and Wednesday 18th December 9.30 am - Swan, Kingfisher and Robin Nativity

Wednesday 18th December 2.30 pm - Cygnets performance

Thursday 19th December - Christmas Dinner

**Friday 20th December - Christmas Dress Down Day - £1 donation to Friends of Hemblington**

Monday 23rd December - Friday 3rd January - Christmas Holidays, school closed

Monday 6th January - INSET day

Wednesday 5th February - Choir to Young Voices

Thursday 6th March - World Book Day

Thursday 13th March - Reception hearing and vision - 9 - 10.30 am

**Week beginning 12th - Thursday 15th May - Key Stage 2 SATs week**

Monday 23rd - Wednesday 25th June - Osprey and Falcons' residential to Hautbois

**Monday 2nd - Friday 13th June 2024 - Year 4 Multiplication Tables Check**

**Monday 9th - Friday 13th June 2024 - Year 1 Phonics Screening**

Tuesday 17th June - Sports Day and picnic

September 2024							October 2024							November 2024							December 2024						
M	T	W	T	F	S	S	M	T	W	T	F	S	S	M	T	W	T	F	S	S	M	T	W	T	F	S	S
						1	1	2	3	4	5	6				1	2	3							1		
2	3	4	5	6	7	8	7	8	9	10	11	12	13	4	5	6	7	8	9	10	2	3	4	5	6	7	8
9	10	11	12	13	14	15	14	15	16	17	18	19	20	11	12	13	14	15	16	17	9	10	11	12	13	14	15
16	17	18	19	20	21	22	21	22	23	24	25	26	27	18	19	20	21	22	23	24	16	17	18	19	20	21	22
23	24	25	26	27	28	29	28	29	30	31				25	26	27	28	29	30	23	24	25	26	27	28	29	
30																			30	31							

January 2025							February 2025							March 2025							April 2025						
M	T	W	T	F	S	S	M	T	W	T	F	S	S	M	T	W	T	F	S	S	M	T	W	T	F	S	S
			2	3	4	5					1	2					1	2		1	2	3	4	5	6		
6	7	8	9	10	11	12	3	4	5	6	7	8	9	3	4	5	6	7	8	9	7	8	9	10	11	12	13
13	14	15	16	17	18	19	10	11	12	13	14	15	16	10	11	12	13	14	15	16	14	15	16	17	18	19	20
20	21	22	23	24	25	26	17	18	19	20	21	22	23	17	18	19	20	21	22	23	21	22	23	24	25	26	27
27	28	29	30	31			24	25	26	27	28			24	25	26	27	28	29	30	28	29	30				

May 2025							June 2025							July 2025							August 2025						
M	T	W	T	F	S	S	M	T	W	T	F	S	S	M	T	W	T	F	S	S	M	T	W	T	F	S	S
			1	2	3	4						1		1	2	3	4	5	6				1	2	3		
5	6	7	8	9	10	11	2	3	4	5	6	7	8	7	8	9	10	11	12	13	4	5	6	7	8	9	10
12	13	14	15	16	17	18	9	10	11	12	13	14	15	14	15	16	17	18	19	20	11	12	13	14	15	16	17
19	20	21	22	23	24	25	16	17	18	19	20	21	22	21	22	23	24	25	26	27	18	19	20	21	22	23	24
26	27	28	29	30	31		23	24	25	26	27	28	29	28	29	30	31				25	26	27	28	29	30	31

Key: White dates - schools open to pupils Yellow dates - pupil holiday Red dates - bank holiday	Five staff training days will be selected from yellow dates, we suggest 2 & 3 September, 25 October, 6 January and 22 April. Some may choose to use twilight hours for staff training instead of some or all of these.
---	--